



**KINGDOM OF CAMBODIA**  
**Nation- Religion- King**

# **Nation-wide Establishment Listing of Cambodia 2009**

## **National Report on FINAL RESULTS**

**National Institute of Statistics, Ministry of Planning  
Phnom Penh, Cambodia**

**Supported by:  
Government of Japan  
and  
Japan International Cooperation Agency (JICA)**

**December, 2009**

# Contents

	Page
<b>Forward</b> .....	iii
<b>Map1. Cambodia by Province</b> .....	v
<b>Figures at a Glance</b> .....	vi
<b>Outline of the Nation-wide Establishment Listing of Cambodia 2009</b> .....	I-1
<b>Brief Analysis of the Final Results</b> .....	I-3
 <b>SECTION 1: National Tables</b>	
Table 1-1. Number of Establishments by Size of Persons Engaged and Sex of Representative - Cambodia (2009) .....	II-1
Table 1-2. Number of Persons Engaged by Size of Persons Engaged and Sex - Cambodia (2009) .....	II-2
Table 1-3. Number of Persons Engaged by Size of Persons Engaged and Sex of Representative - Cambodia (2009) .....	II-3
Table 1-4. Number of Establishments by Size of Persons Engaged and whether Registered to the Ministry of Commerce or not - Cambodia (2009) .....	II-4
Table 1-5. Number of Persons Engaged by Size of Persons Engaged and whether Registered to the Ministry of Commerce or not - Cambodia (2009) .....	II-5
Table 1-6. Number of Establishments by Size of Persons Engaged and Ownership of Organization - Cambodia (2009) .....	II-6
Table 1-7. Percent Distribution of Number of Establishments by Size of Persons Engaged and Ownership of Organization - Cambodia (2009) .....	II-7
Table 1-8. Number of Persons Engaged by Size of Persons Engaged and Ownership of Organization - Cambodia (2009) .....	II-8
Table 1-9. Percent Distribution of Number of Persons Engaged by Size of Persons Engaged and Ownership of Organization - Cambodia (2009) .....	II-9

Table 2-1. Number of Establishments by Section of Industrial Classifications and Sex of Representative - Cambodia (2009) .....	II-10
Table 2-2. Percent Distribution of Number of Establishments by Section of Industrial Classifications and Sex of Representative - Cambodia (2009) .....	II-11
Table 2-3. Number of Persons Engaged by Section of Industrial Classifications and Sex - Cambodia (2009) .....	II-12
Table 2-4. Percent Distribution of Number of Persons Engaged by Section of Industrial Classifications and Sex - Cambodia (2009) .....	II-13
Table 2-5. Number of Persons Engaged by Section of Industrial Classifications and Sex of Representative - Cambodia (2009) .....	II-14
Table 2-6. Percent Distribution of Number of Persons Engaged by Section of Industrial Classifications and Sex of Representative - Cambodia (2009) .....	II-15
Table 2-7. Number of Establishments by Section of Industrial Classifications and whether Registered to the Ministry of Commerce or not - Cambodia (2009) .....	II-16
Table 2-8. Percent Distribution of Number of Establishments by Section of Industrial Classifications and whether Registered to the Ministry of Commerce or not - Cambodia (2009) .....	II-17
Table 2-9. Number of Persons Engaged by Section of Industrial Classifications and whether Registered to the Ministry of Commerce or not - Cambodia (2009) .....	II-18
Table 2-10. Percent Distribution of Number of Persons Engaged by Section of Industrial Classifications and whether Registered to the Ministry of Commerce or not - Cambodia (2009) .....	II-19
Table 2-11. Number of Establishments by Section of Industrial Classifications and Ownership of Organization - Cambodia (2009) .....	II-20
Table 2-12. Number of Persons Engaged by Section of Industrial Classifications and Ownership of Organization - Cambodia (2009) .....	II-21
Table 2-13. Number of Establishments by Class of Industrial Classifications and Sex of Representative - Cambodia (2009) .....	II-22
Table 2-14. Number of Persons Engaged by Class of Industrial Classifications and Sex - Cambodia (2009) .....	II-30

## **SECTION 2: Provincial Tables**

Table 3-1. Number of Establishments by Sex of Representative - Provinces (2009) .....	-1
Table 3-2. Number of Persons Engaged by Sex - Provinces (2009) .....	-2
Table 3-3. Number of Persons Engaged by Sex of Representative - Provinces (2009) .....	-3
Table 3-4. Number of Establishments by whether Registered to the Ministry of Commerce or not - Provinces (2009) .....	-4
Table 3-5. Number of Persons Engaged by whether Registered to the Ministry of Commerce or not - Provinces (2009) .....	-5
Table 3-6. Number of Establishments by Ownership of Organization - Provinces (2009) .....	-6
Table 3-7. Percent Distribution of Number of Establishments by Ownership of Organization - Provinces (2009) .....	-7
Table 3-8. Number of Persons Engaged by Ownership of Organization - Provinces (2009) .....	-8
Table 3-9. Percent Distribution of Number of Persons Engaged by Ownership of Organization - Provinces (2009) .....	-9
Table 4-1. Number of Establishments by Size of Persons Engaged and Sex of Representative - Provinces (2009) .....	-10
Table 4-2. Number of Persons Engaged by Size of Persons Engaged and Sex - Provinces (2009) .....	-34
Table 5-1. Number of Establishments by Section of Industrial Classifications and Sex of Representative - Provinces (2009) .....	-58
Table 5-2. Percent Distribution of Number of Establishments by Section of Industrial Classifications and Sex of Representative - Provinces (2009) .....	-82
Table 5-3. Number of Persons Engaged by Section of Industrial Classifications and Sex - Provinces (2009) .....	-106
Table 5-4. Percent Distribution of Number of Persons Engaged by Section of Industrial Classifications and Sex - Provinces (2009) .....	-130

**Appendices**

Appendix 1: Summary Sheet.....IV-1

Appendix 2: Checking Sheet for Document Management.....IV-2

Appendix 3: Establishment Listing Form.....IV-3

## FOREWORD

It is our great pleasure to officially release the final results of the Nation-wide Establishment of Cambodia 2009 (EL2009) which was conducted from 9 February to 8 March 2009 with 9 February 2009 as the reference date, covering the entire territory of the Kingdom of Cambodia. Historically, it was the first Establishment Listing conducted as a complete count.

Under the legal basis of the Statistics Law, in the whole Cambodia's territory, the EL2009 aims at compiling basic statistics on establishments and constructing a comprehensive list of establishments. The establishments list provides information on the current situation of economic activities in Cambodia and serves for various users such as policy makers, government officials at national and local levels, NGOs, private sectors, researchers, and development partners. The establishment list is also used as a census frame for the 2011 Economic Census and a sampling frame for more detailed surveys of establishment and enterprises.

The final results contribute to the decentralized and de-concentration process and socio-economic development goals of the Royal Government in supporting statistics-based planning. I am sure that the public are very much benefitted to have the EL2009 results at the full extent possible.

We express our deep sense of gratitude to the Royal Government of Cambodia led by Samdech Akka Moha Sena Padei Techo HUN SEN, Prime Minister of the Kingdom of Cambodia for his constant support to the statistical activities. We thank the leaders of the Ministry of Planning and the National Institute of Statistics (NIS) as well. Our thanks are also due to line ministries such as Ministry of Industry Mine and Energy, Ministry of Commerce and other relevant government institutions which facilitated our activities and led to the success of the EL2009.

I gratefully acknowledge funding and technical assistance provided by the Government of Japan and Japan International Cooperation Agency (JICA). Our deep thanks are due to Mr. Fumihiko Nishi, JICA Chief Adviser, Dr. Atsushi Ohtomo, Mr. Akihiko Itoh, Mr. Yasuo Ishida, and other JICA experts of this project, who made all the best efforts in the complete success of the implementation of the EL 2009.

We thank the Governors of Phnom Penh Capital, provinces, and districts as well as commune and village chiefs who provided administrative facilitation for the implementation of the EL2009. Our thanks are due to also the Press, the Radio, and the TV who played a very important role in the EL2009 publicity.

The EL2009 was a huge statistical exercise and its completion was possible with the total help and cooperation received from one and all. The major share of the credit for the success of the EL2009 should go to the entrepreneurs of small, medium and large enterprises who paid busy and valuable time of their daily business to provide information to the

establishment listing questionnaires. Deep thanks are also given to enumerators, supervisors, and the staff of National Institute of Statistics (NIS) and Ministry of Planning (MoP) who are devoted, hard working, and loyal. H.E. San Sy Than, Director General of the National Institute of Statistics ably led the EL2009 operations, assisted by Mr. Hor Darith, Deputy Director General, Mr. Mich Kanthul, Director of Economic Statistics Department, Mr. Saint Lundy, Director of Information and Communication Technology Department, Mr. Khin Sovorleak, Deputy Director of Economic Statistics Department, Mr. Kim Net, Deputy Director of Social Statistics Department, and Other NIS staffs.

Finally, thanks are due to every one of them who contributed to the great success of the EL2009.

Ministry of Planning  
Phnom Penh  
December, 2009

**CHHAY THAN**  
Senior Minister  
Minister of Planning

**Map 1. Cambodia by Province**





## Final Results of the Nation-wide Establishment Listing of Cambodia 2009

### Figures at a Glance

Number of Provinces <sup>1)</sup> Including 1 Municipality	24
Number of Districts Including 8 Khans and 26 Cities	193
Number of Communes Including 204 Sangkats	1,621
Number of Villages	14,073
Number of Establishments	376,761
5 persons engaged and over	46,233
10 persons engaged and over	13,123
100 persons engaged and over	692
1000 persons engaged and over	106
Female representative (%)	50.1
Urban (%) <sup>2)</sup>	31.2
Rural (%)	68.8
Number of Persons Engaged	1,469,712
Male	626,783
Female	842,929
Number of Persons Engaged per Establishment	3.9
Number of Establishments per km <sup>2</sup>	2.1
Number of Establishments per 1,000 Persons	28.1
Population per Establishment	35.6
Number of Establishments per 1,000 Households	132.6
Number of Households per Establishments	7.5
Number of Enterprises <sup>3)</sup> 10 persons engaged and over	11,754

1) The final results herein are based on the new administrative area promulgated on 12 January 2009

2) Refer to P7, National Report on Final Census Results, General Population Census of Cambodia 2008

3) Herein, an enterprise means a single establishment or a head office with its branch(es).

# **Outline of the Nation-wide Establishment Listing of Cambodia 2009**

Hereafter regard “the Nation-wide Establishment Listing of Cambodia 2009” as “EL2009”. NIS stands for the National Institute of Statistics, the Ministry of Planning, Cambodia.

## **1. Purpose**

- (1) Produce statistics of distribution of establishments and persons engaged according to various characteristics of establishments such as industry, size, and legal status, and according to various regional breakdowns.
- (2) Develop a national comprehensive frame for economic surveys and 2011 Economic Census of Cambodia.
- (3) Develop a census frame for the 2011 Economic Census of Cambodia.

## **2. Reference date**

As of 9 February 2009

## **3. Period of enumeration**

From 9 February to 8 March 2009

## **4. Legal basis**

Article 8 (or 9), the Statistics Law of Cambodia

## **5. Area coverage**

The whole territory of Cambodia

## **6. Coverage**

All the establishments excluding those which belong to Section A (Agriculture, Forestry, and Fishery) and Section T (Use Activities of Household as Employees) of International Standard Industrial Classifications (ISIC) Rev.4, mobile establishments, and national/local government offices including military quarters and diplomatic offices.

### **Definition of establishment:**

An establishment is an enterprise or part of enterprise which is situated in a single location and in which only a single (non-ancillary) productive activity is carried out or in which the principal productive activity accounts for most of the value added. (United Nations Statistics Division)

## **7. Field organization**

Ministry of Planning (NIS) → Provincial Coordinators (24, mostly Directors of the Provincial Planning Department) → Supervisors (40, mostly NIS officers) → Enumerators (358, mostly provincial or district planning officers)

## **8. Method**

An enumerator visits each establishment, and interviews the owner or the employee who is entitled to represent the establishment, using EL2009 Form.

## **9. Administrative areas**

The final results are based on the new administrative areas promulgated on 12 January 2009.

## **10. Topics to be studied**

- (1) Name of establishment
- (2) Sex of representative of establishment
- (3) Address of establishment
- (4) Registered to Ministry of Commerce or not
- (5) Ownership of organization (Legal status)
- (6) Head office or branch
- (7) Number of persons engaged by sex
- (8) Kind of business activities (Industrial classification)
- (9) Telephone number of establishment

## **11. Data processing, Analysis, and Dissemination**

- (1) Preliminary results were released on 9 June 2009.
- (2) Final results are released on 9 December 2009.
- (3) Some analytical reports are planned to be released after April 2010.

## **12. Technical assistance**

Project on Improving Official Statistics in Cambodia by the Japan International Cooperation Agency (JICA) has been providing technical assistance from August 2005 to September 2010.

## **13. Fund contribution**

- (1) Ministry of Planning
- (2) Counterpart fund from Japan
- (3) JICA project in the NIS
- (4) JICA project in the Ministry of Women's Affairs

## **14. Preparatory stages**

- (1) 2006 Establishment Partial Listing in Phnom Penh
- (2) 2007 Establishment Statistics Sample Survey in Phnom Penh

## **Brief Analysis of Final Results of the Nation-wide Establishment Listing of Cambodia 2009**

The Nation-wide Establishment Listing of Cambodia 2009 (EL2009) was conducted with 9 February 2009 as the reference date. The EL2009 covered all of fixed establishments in the whole territory of Cambodia and was the first time in the history of Cambodia. The final results of the EL2009 were released on 9 December 2009 after data processing for ten months, and are outlined as follows:

### **1. Total number of establishments is 376,761 in Cambodia.** (Refer to Table 1-1.)

There were 376,761 establishments in Cambodia as of 9 February 2009 as the final results of the EL2009. The number of persons engaged in these establishments was 1,469,712 composed of 626,783 males accounting for 42.6% and 842,929 females (57.4%). Females are fairly more than males.

#### ***Definition of establishment***

*An establishment is an enterprise or part of enterprise which is situated in a single location and in which only a single (non-ancillary) productive activity is carried out or in which the principal productive activity accounts for most of the value added. This conforms to the International Standard Industrial Classifications (ISIC) Rev.4 of the United Nations.*

*Generally speaking, there are three kinds of establishments: fixed, movable, and mobile. "Fixed" means an establishment running some economic activity always in the fixed place and building. "Movable" means an establishment running some economic activity always in the fixed place, but it is possible to move the place easily. And "mobile" means an establishment running some economic activity on the run. Since the EL2009 covered "fixed" and "movable" only, unfixed "mobile" was not included in these final results.*

#### ***Coverage***

*The EL2009 covered all establishments excluding "Agriculture, Forestry, and Fishery" (Section A) and "Household Activities" (Section T) of ISIC. It also excluded national/local government offices including military quarters and diplomatic offices.*

*However, establishments which process agriculture, forestry, and fishery products are included in these final results as "Manufacturing" (Section C of ISIC).*

#### ***Estimation of the number of persons engaged in mobile establishments***

*According to the final results of the 2008 Population Census, the number of persons engaged excluding "Agriculture, Forestry, and Fishery" (Section A) and "Household Activities" (Section T) was 1.92 millions. These include 320 thousands national and local government officers.<sup>1)</sup> Then, it is possible to roughly estimate the number of persons engaged who should have been covered by the EL2009 at 1.6 millions. Since the final results of EL2009 show that the number of persons engaged was 1.47 millions, it is estimated that the remaining 130 thousands persons work at mobile establishments. Therefore, it can be said that the EL2009 covered more than 90% of persons engaged belonging to the above mentioned Sections of ISIC.*

*However, since many persons work for two or more establishments, the number of persons*

*engaged working at mobile establishments might be more than 130 thousands. As the final results of 2008 Population Census show that the number of persons engaged who has secondary jobs was 370 thousands, the number of persons engaged working at mobile establishments could be 500 thousands at the maximum.*

1) *Source: Cambodian Statistical Year Book 2008*

## **2. Cambodia has relatively fewer establishments for its population size.**

The number of establishments per 1,000 persons in Cambodia was 28.1 establishments. As compared with other countries, Indonesia was 96.7, Japan 46.3, and Laos 35.0 respectively. Among these four countries, Cambodia has relatively fewer establishments for its population size.<sup>2)</sup> It seems that a policy to promote the inauguration of new establishments is required.

The number of persons engaged per establishment was 3.9. As compared with other countries, Japan was 9.9, Laos 2.7, and Indonesia 2.2 respectively. The size of persons engaged per establishment in Cambodia was still smaller than Japan, but a little bigger than Laos and Indonesia. This may be attributable to the fact that the number of persons engaged in large-scale establishments with one hundred or more persons engaged account for more than 25% of the total.

2) *There are some slight differences in the definition of establishment among the four countries. The data sources are 2008 ESCAP Population Data Sheet and 2006 Economic Census of Indonesia, 2005 Population Census and 2006 Establishment and Enterprise Census of Japan, and 2008 ESCAP Population Data Sheet and 2006 Economic Census of Laos.*

## **3. The number of establishments with one or two persons engaged accounts for more than 70%. (Refer to Table 1-1 and 1-2.)**

The number of establishments with one person engaged was 112 thousands accounting for 29.8%, and that with two persons engaged was 149 thousands (39.6%). Thus, one or two-person size establishments accounted for around 70% of the total.

The number of establishments with five or more persons engaged was 46 thousands accounting for 12.3%; that with ten or more persons engaged was 13 thousands (3.5%); that with one hundred or more persons engaged was 692 (0.2%); and that with one thousand or more persons engaged was only 106. That is to say, large-scale establishments account for a very low portion in Cambodia.

On the other hand, the number of persons engaged in establishments with five or more persons engaged was 827 thousands accounting for 56.3%, far over 50%; that with ten or more persons engaged was 626 thousands (42.6%), a little over 40%; that with one hundred or more persons engaged was 373 thousands (25.4%), slightly over a quarter; and that with one thousand or more persons engaged was 213 thousands (14.5%). Although there are only a few large-scale establishments in Cambodia, persons engaged working there account for a relatively higher portion.

**4. Female representatives of establishments account for 50%. (Refer to Table 1-1.)**

Representatives of establishments were composed of around 50% males and 50% females. Representatives of establishments with one person engaged were composed of 33 thousand male representatives and 80 thousand females: female accounted for over 70%. However, male accounted for over 50% in establishments with two or more persons engaged. The larger the scale of establishment is, the higher the ratio of male representative is.

**5. Most of establishments are private. (Refer to Table 1-6.)**

Private establishments accounted for 96.1 % of the total number of establishments. It means that most of establishments are private in Cambodia. On the other hand, the number of persons engaged in private establishments was 1.27 millions accounting for 86.6%.

**6. “Wholesale and retail trade and repair of motor vehicles and motorcycles” accounts for more than 50%. (Refer to Table 2-1, 2-2, 2-3, 2-4.)**

Looking at the number of establishments by Section of ISIC, “Wholesale and retail trade and repair of motor vehicles and motorcycles” (Section G) was the biggest Section, and was 198 thousands accounting for 52.6%. Subsequently, “Manufacturing” (Section C) was 85 thousands (22.5%) including “Manufacture of grain mill products” (Class 1061); “Manufacture of knitted and crocheted fabrics” (Class 1391); “Manufacture of wearing apparel, except fur apparel” (Class 1410); “Manufacture of wines” (Class 1102); “Manufacture of sugar” (Class 1072), etc. Then, “Accommodation and food service activities” (Section I) was 29 thousands (7.8%). “Other service activities” (Section S) was 26 thousands (6.9%) including “Hairdressing and other beauty treatment” (Class 9602); “Activities of religious organizations” (Class 9491); “Repair of consumer electronics” (Class 9521), etc. “Education” (Section P) was 9 thousands (2.4%) including “Pre-primary and primary education” (Class 8510); “Secondary education” (Class 8521), etc.

In terms of the number of persons engaged by Section of ISIC, “Manufacturing” (Section C) was the biggest Section, and was 528 thousands accounting for 35.9%. Subsequently, “Wholesale and retail trade and repair of motor vehicles and motorcycles” (Section G) was 432 thousands (29.4%); “Other service activities” (Section S) was 124 thousands (8.4%); “Education” (Section P) was 123 thousands (8.4%); “Accommodation and food service activities” (Section I) was 113 thousands (7.7%).

**7. 30% of the total number of establishments are located in the urban area <sup>3)</sup>**

The number of establishments which were located in the urban area was 117 thousands accounting for 31.2% of the total. In the rural area, there were 259 thousands establishments accounting for 68.8% , that is, over two thirds of the total.

On the other hand, looking at large-scale establishments with one hundred or more persons engaged, there were 516 establishments in the urban area accounting for 74.6%. In the rural area, there were only 176 establishments (25.4%). Thus, three quarters of large-scale establishments were located in the urban area. This distribution is the exact opposite of the above mentioned distribution of all establishments.

### **3) Definition of Urban Area**

*Every commune to which the following three criteria are applicable is regarded as urban area:*

- (a) Population density exceeding 200 per km<sup>2</sup>;*
- (b) Percentage of male employment in agriculture below 50 percent; and*
- (c) Total population of the commune exceeding 2,000.*

*See P7, National Report on Final Census Results, General Population Census of Cambodia 2008.*

## **8. The number of enterprises <sup>4)</sup> in Cambodia is 12 thousands**

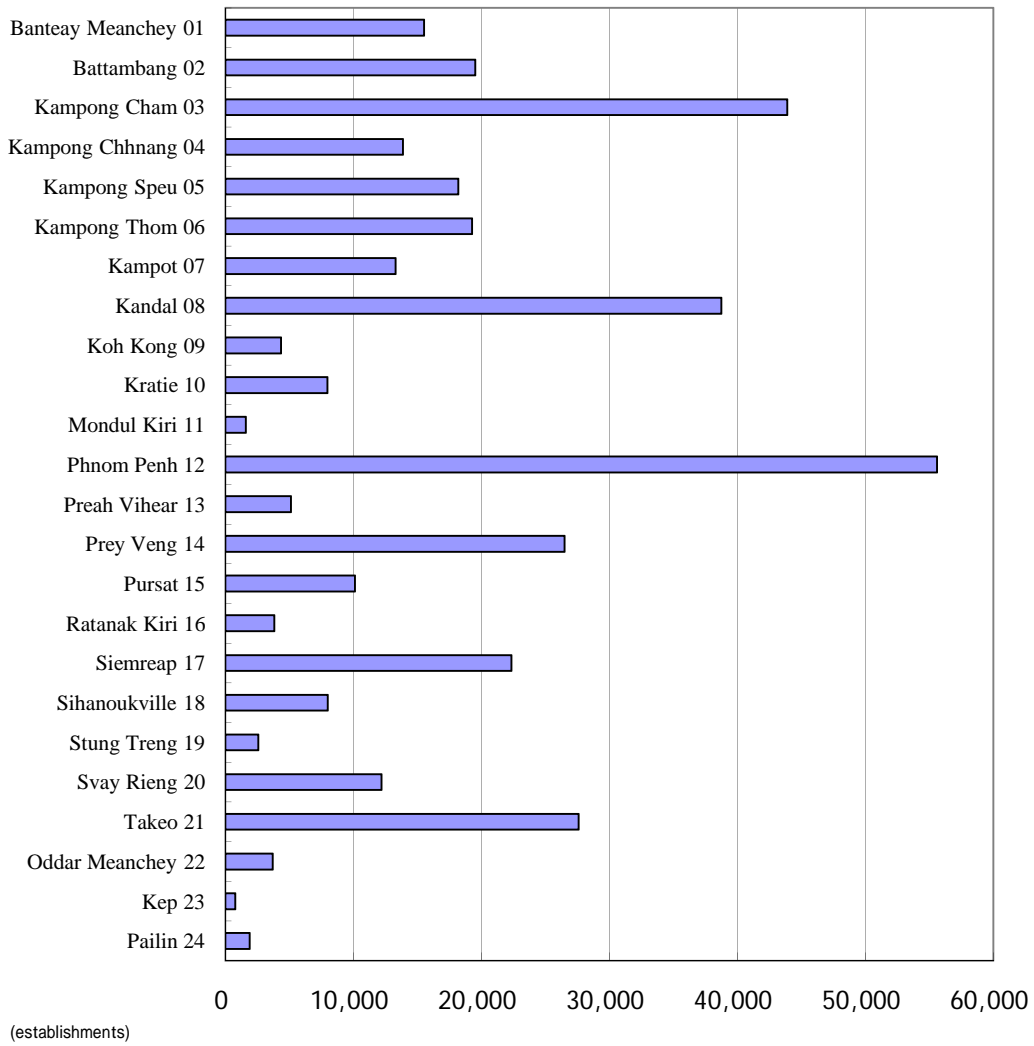
There were 12 thousand enterprises in Cambodia. The number of persons engaged in these enterprises was 64 thousand persons accounting for 43.5% of the total, that is, more than 40%.

### **4) Definition of Enterprise**

*Every establishment or group of establishments to which either of the following two criteria is applicable is regarded as an enterprise:*

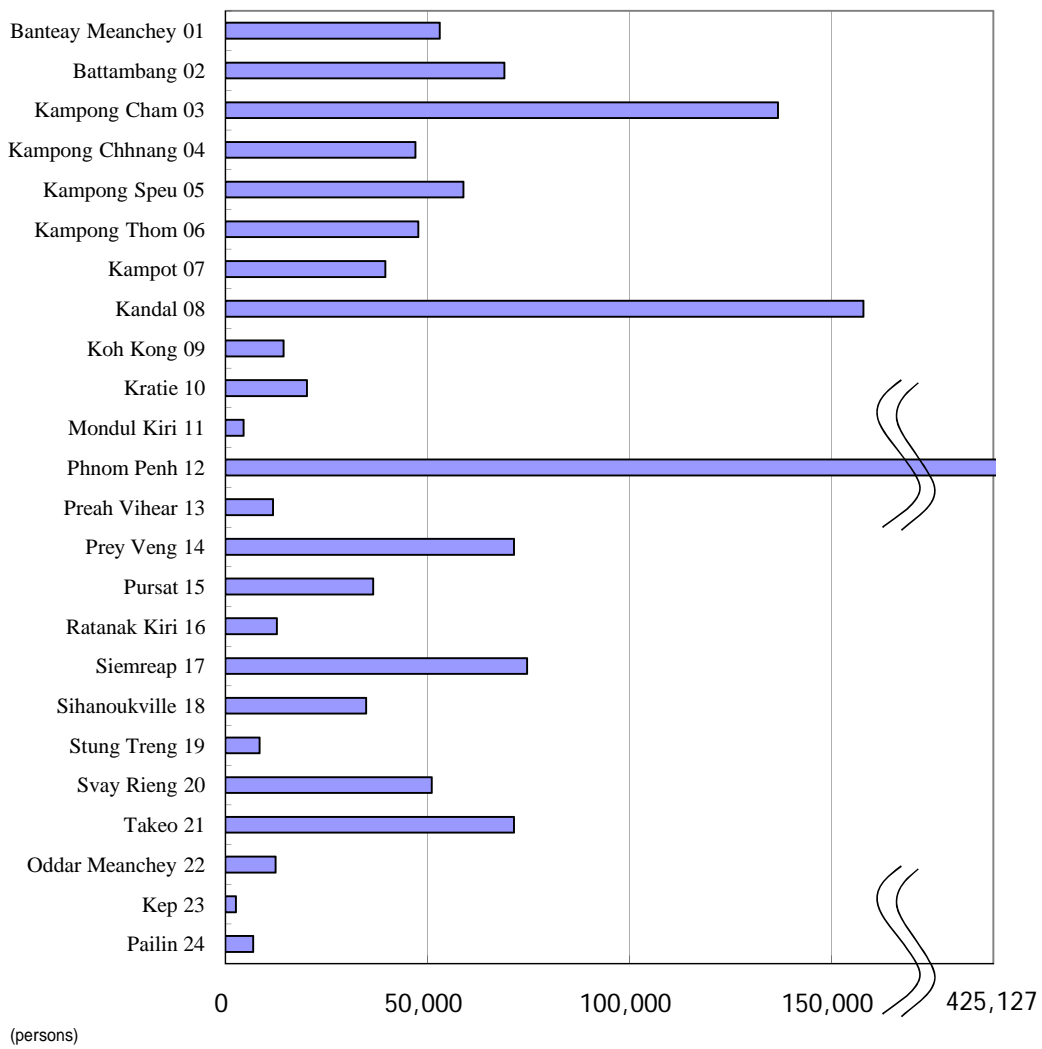
- (a) Only one single establishment with ten or more persons engaged.*
- (b) A group of establishments having the head office and one or more branches.*

**Graph 1. Number of Establishments by Province in 2009**

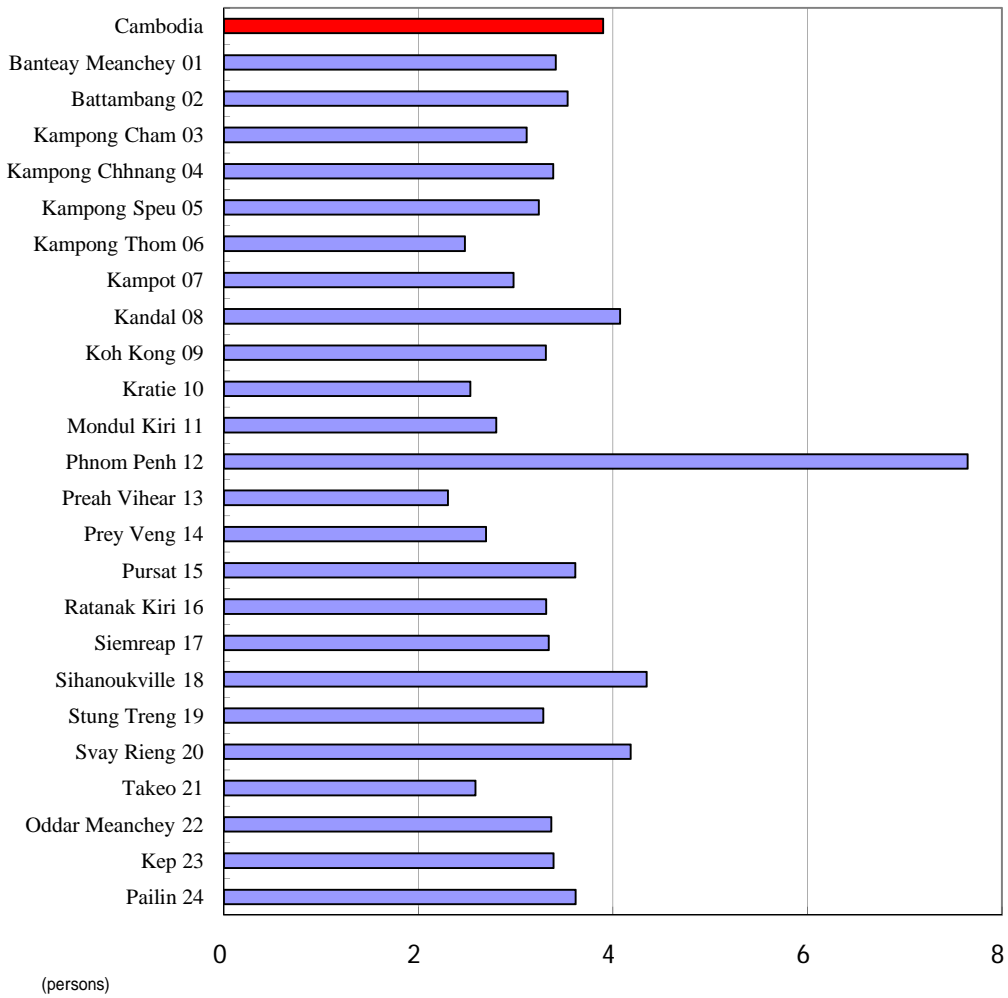




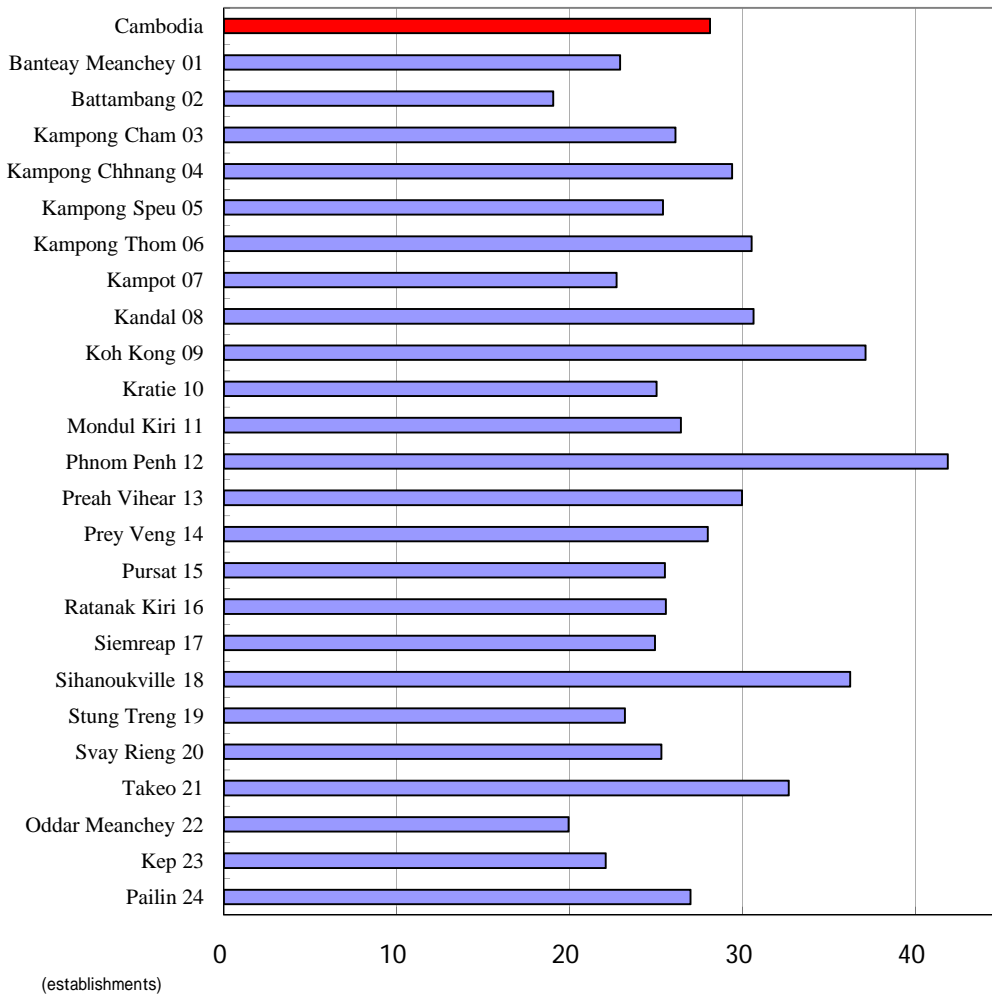
**Graph 2. Number of Persons Engaged by Province in 2009**



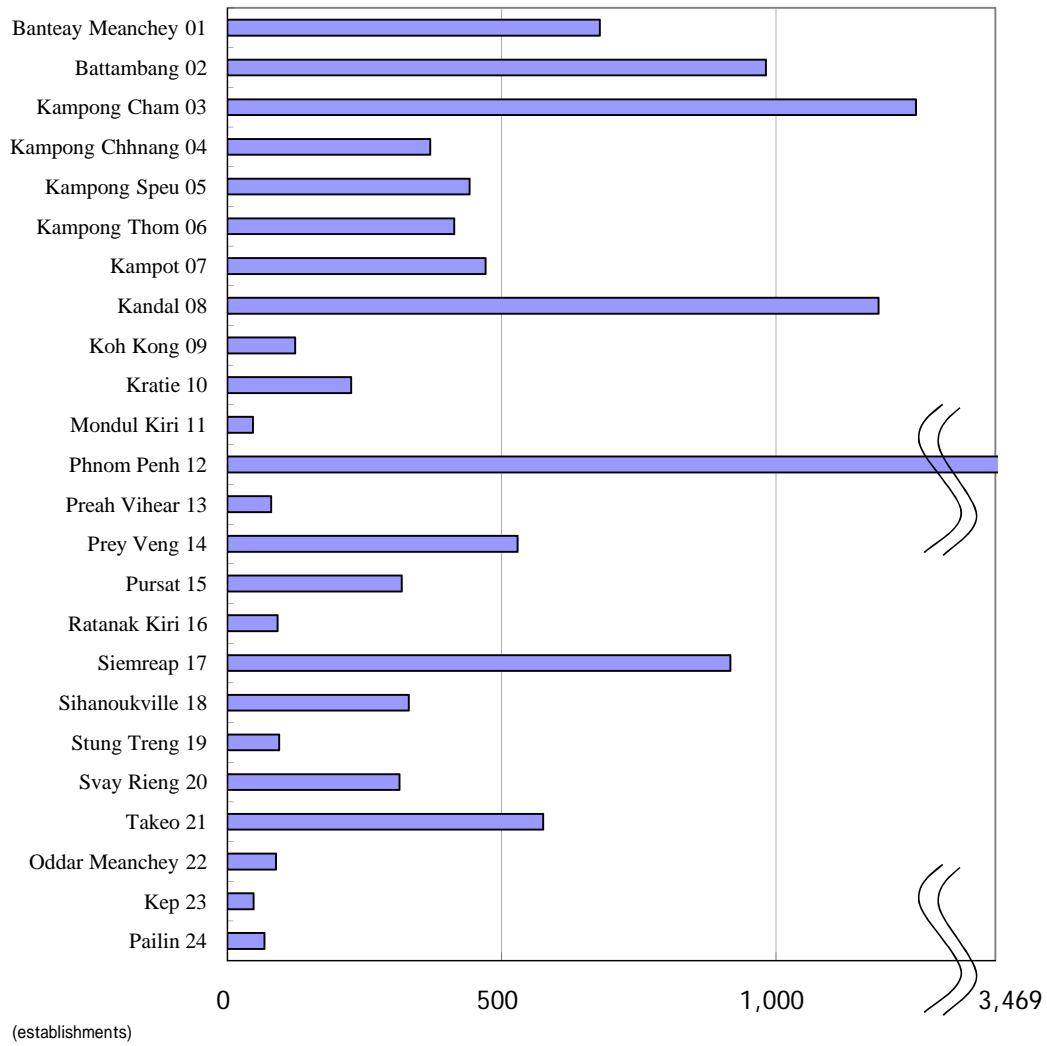
**Graph 3. Number of Persons Engaged per One Establishment  
by Province in 2009**



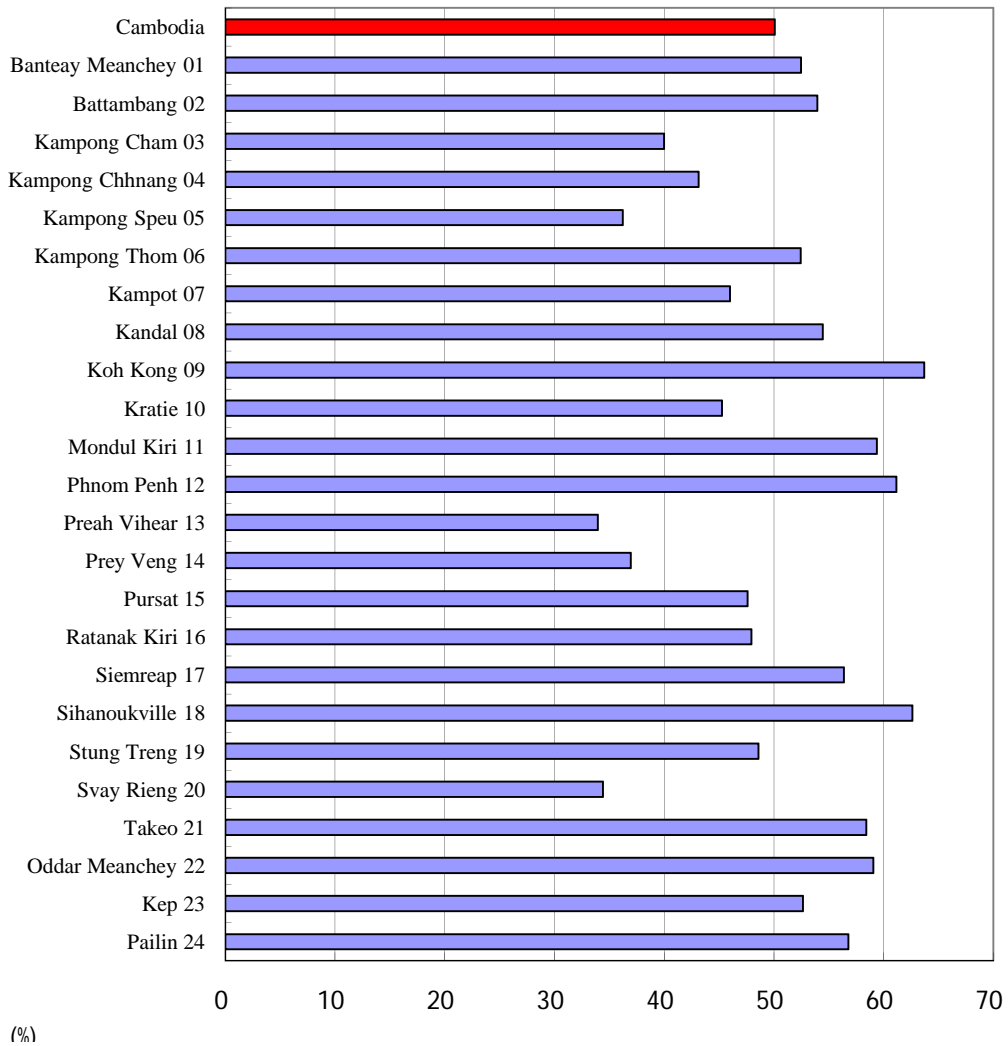
**Graph 4. Number of Establishments per 1,000 Persons  
by Province in 2009**



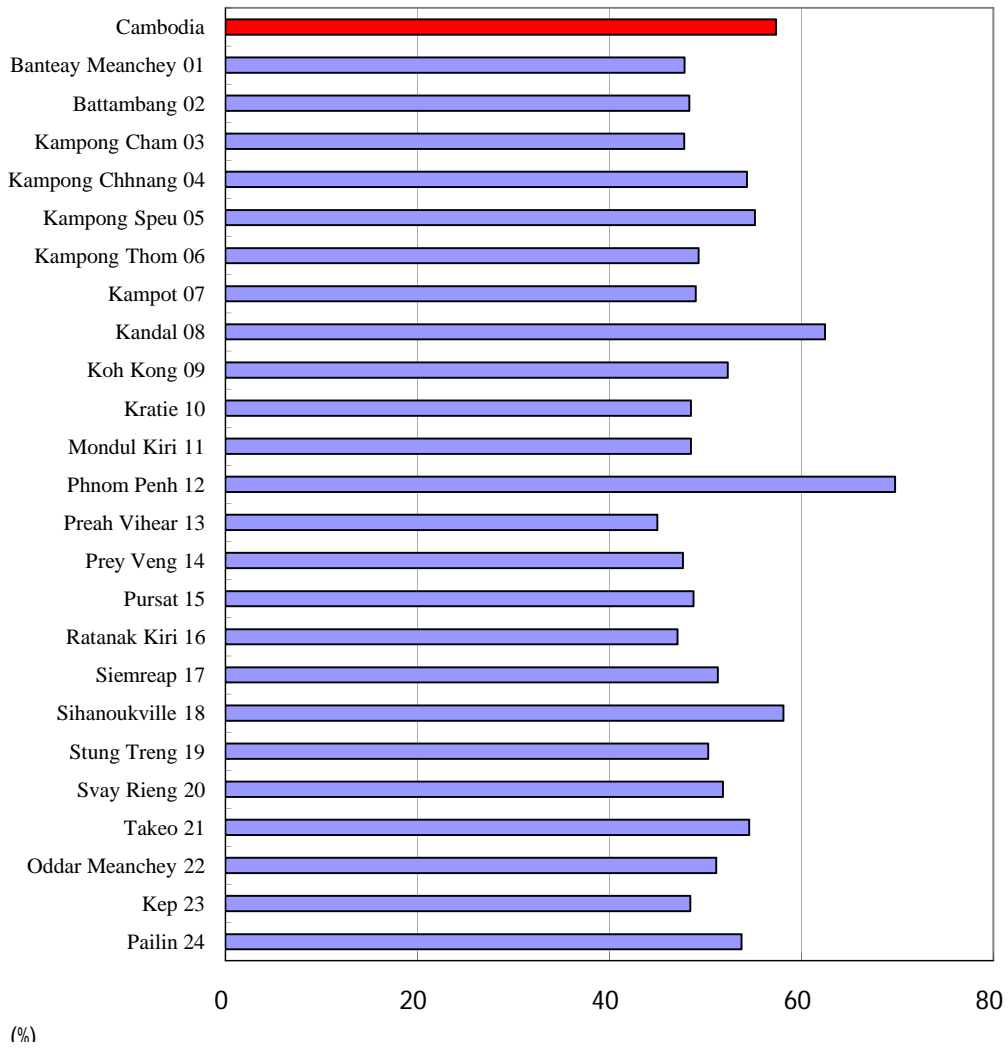
**Graph 5. Number of Establishments with 10 or More Persons Engaged by Province in 2009**



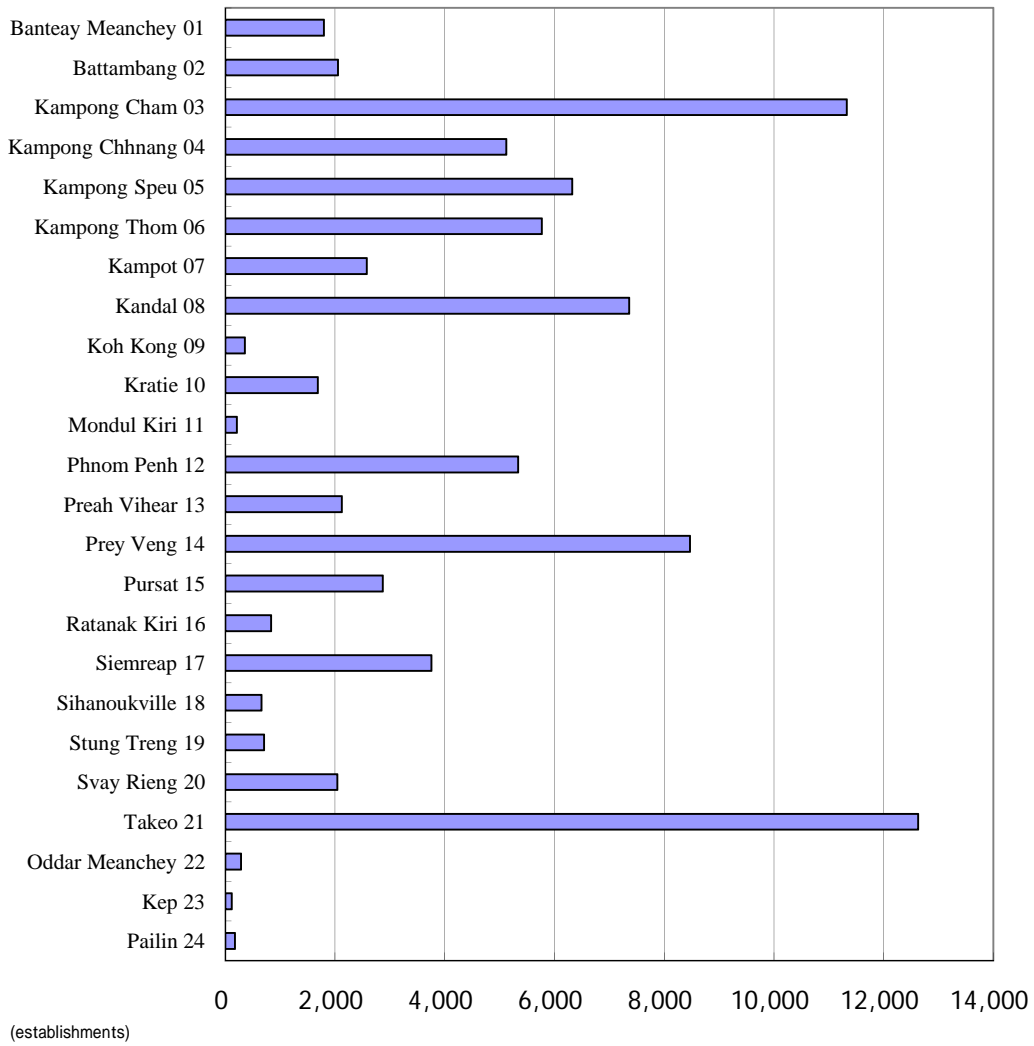
**Graph 6. Percent of Female to Total Number of Establishment Representatives by Province in 2009**



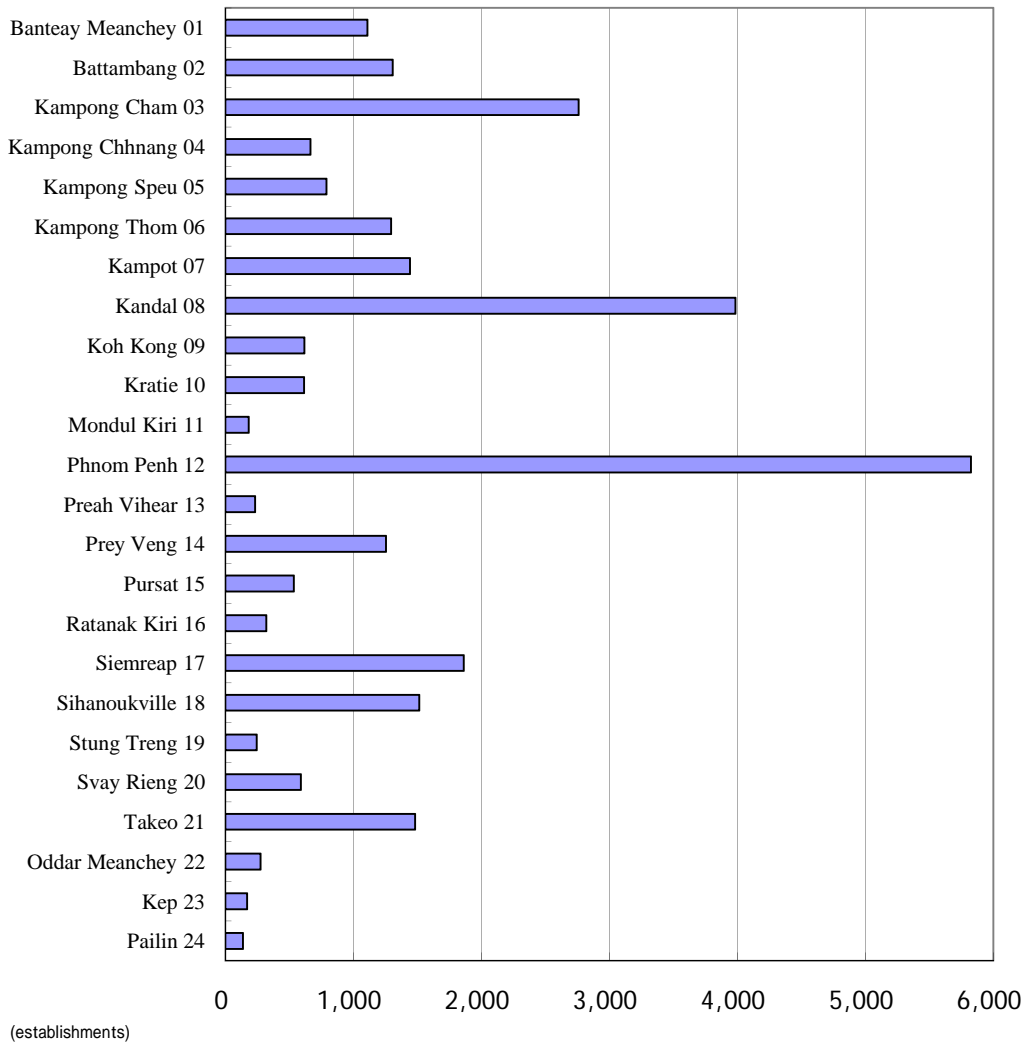
**Graph 7. Percent of Female to Total Number of Persons Engaged  
by Province in 2009**



**Graph 8. Number of Establishments in Manufacturing Sector of ISIC by Province in 2009**



**Graph 9. Number of Establishments in “Accommodation and Food Service Activities” Sector of ISIC by Province in 2009**





**Graph 10. Number of Establishments in Education Sector of ISIC  
by Province in 2009**

